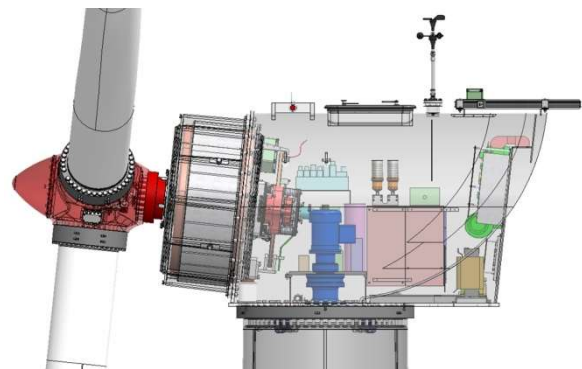


WindRose III-100kW Turbine

General Specifications



May 2018

SEOLTECH CO.,LTD.
100-186 Calsan-Dong, Dalseo-Ku, Daegu Korea 704-900
Tel : 82.53.580.7400 Fax : 82.53.580.7499
E-mail: rosa@seoltech.com & skywindearth@seoltech.com

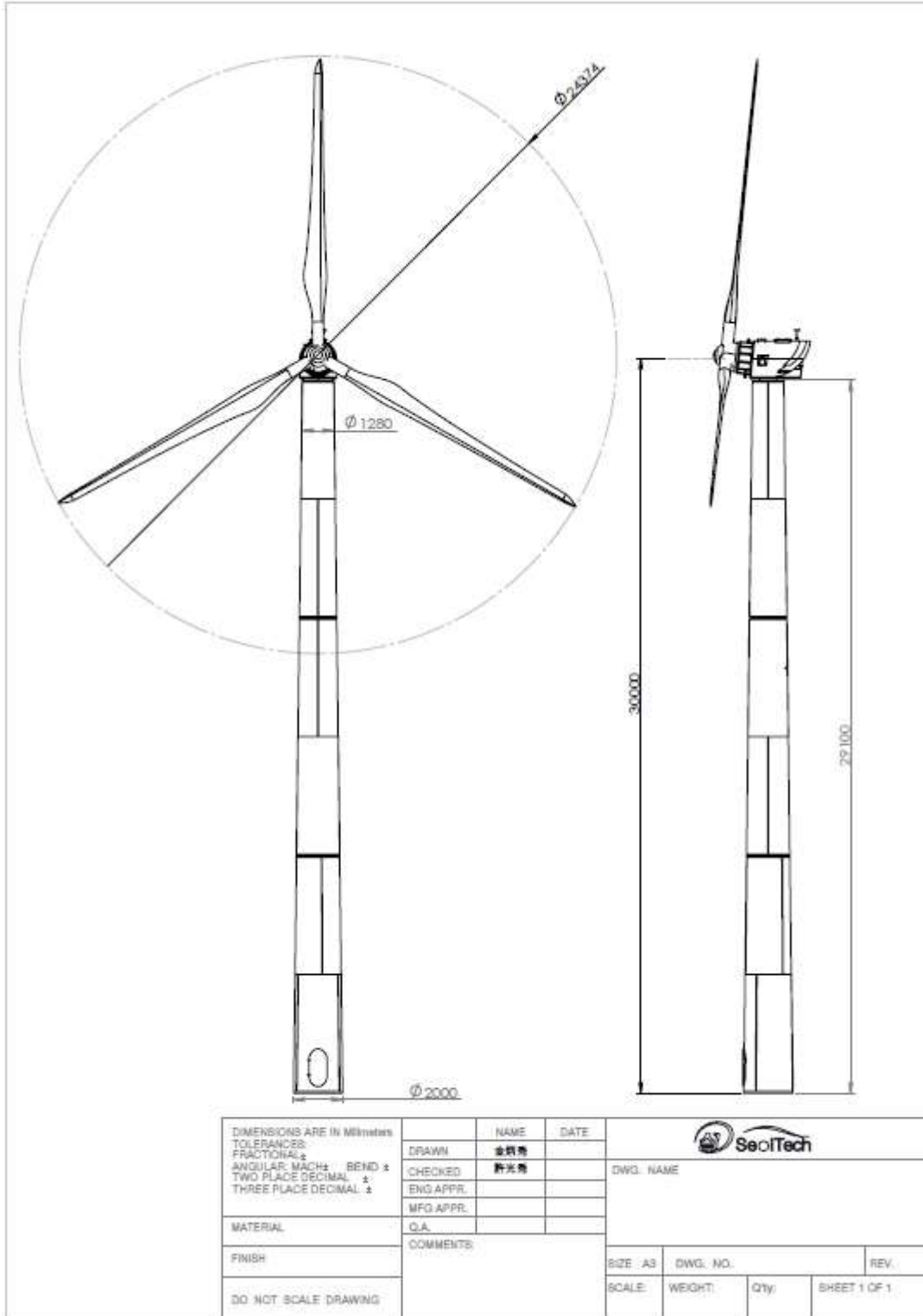
WindRose Turbine Specification	
Rated Power	100kW@10m/s
Wind Class	III-S
Power Control	Pitch and Variable Speed
Number of Blades	3
Rotor diameter	24.4m(11.7m-length)
Swept Area	467.4 m ²
Blade Airfoil	R1235
Material & Surface Treatment	GFRP/Resin, Urethane painting
PMSG & Rotor Speed	50rpm (Direct Drive)
PCS	BTB Converter
Rated Wind Speed	10 m/s@50rpm
Cut in Wind Speed	2.5 m/s
Cut out Wind Speed	20 m/s
Ambient Temperature	-20°~+40°
Brakes	Pitch and Hydraulics Brake
Yawing	Active Electric motor
Tower	30 m (Tubular)
Design Life	20 yrs
Design Standard	IEC61400-12, 23

SEOLTECH CO.,LTD.

100-186 Calsan-Dong, Dalseo-Ku, Daegu Korea 704-900

Tel : 82.53.580.7400 Fax : 82.53.580.7499

E-mail: rosa@seoltech.com & skywindearth@seoltech.com



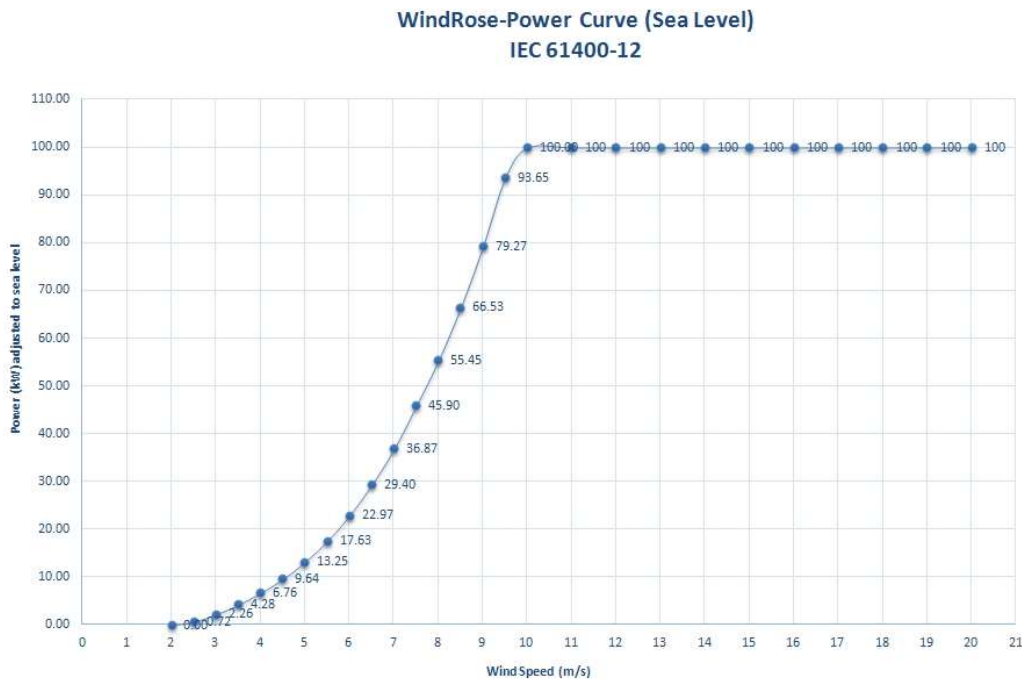
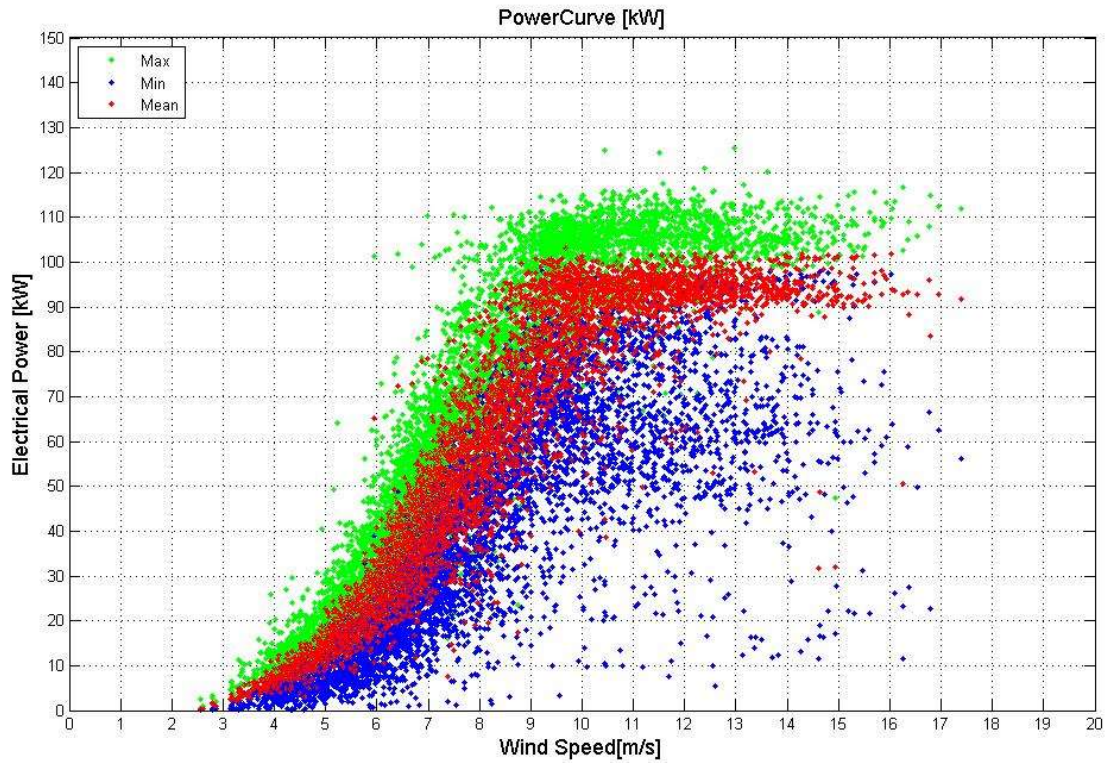
100kW Turbine Power Performance

SEOLTECH CO.,LTD.

100-186 Calsan-Dong, Dalseo-Ku, Daegu Korea 704-900

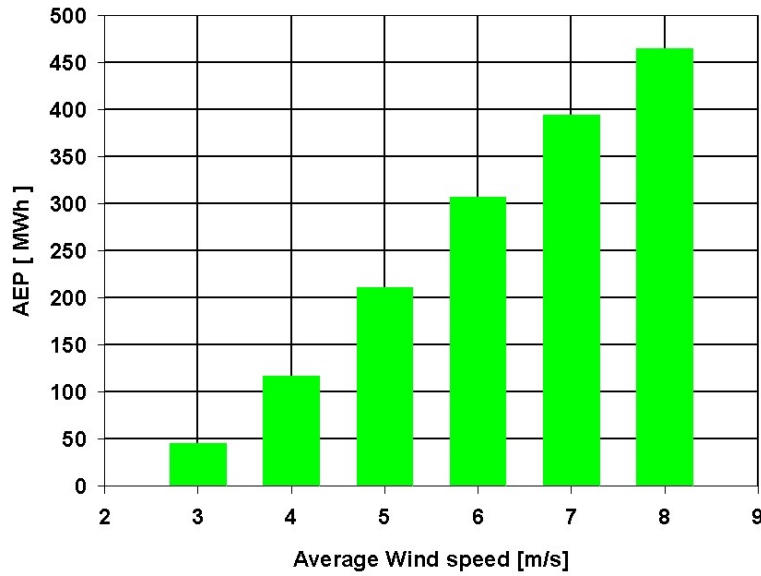
Tel : 82.53.580.7400 Fax : 82.53.580.7499

E-mail: rosa@seoltech.com & skywindearth@seoltech.com

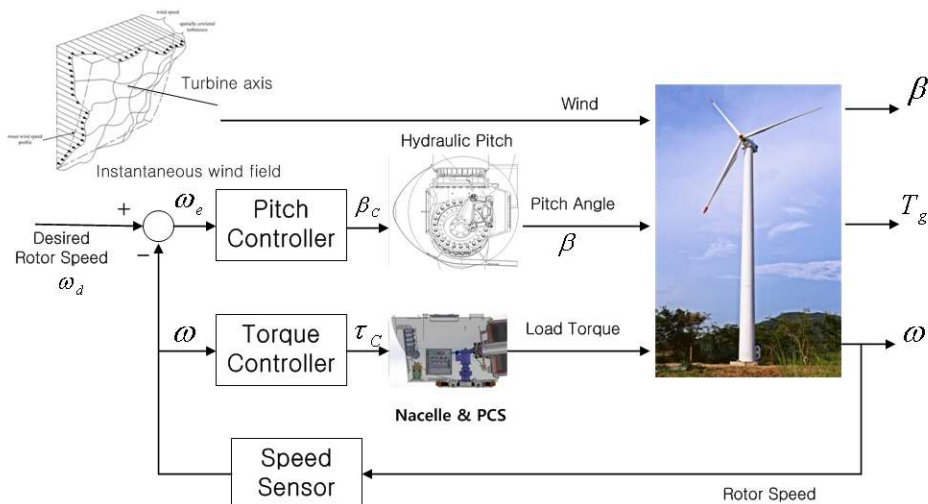


SEOLTECH CO.,LTD.
 100-186 Calsan-Dong, Dalseo-Ku, Daegu Korea 704-900
 Tel : 82.53.580.7400 Fax : 82.53.580.7499
 E-mail: rosa@seoltech.com & skywindearth@seoltech.com

WindRose-Annual Energy Production(AEP)



- ✓ Green Energy, Unlimited & Free Energy
- ✓ More Cost Effective
- ✓ Variable Speed, Pitch controlled
- ✓ DD, Permanent Magnet Synchronous Generator
- ✓ Active yaw drive system
- ✓ High reliability and low maintenance Wind Turbine
- ✓ High AEP, 2yrs Warranty



Turbine Control

SEOLTECH CO.,LTD.

100-186 Calsan-Dong, Dalseo-Ku, Daegu Korea 704-900

Tel : 82.53.580.7400 Fax : 82.53.580.7499

E-mail: rosa@seoltech.com & skywindearth@seoltech.com